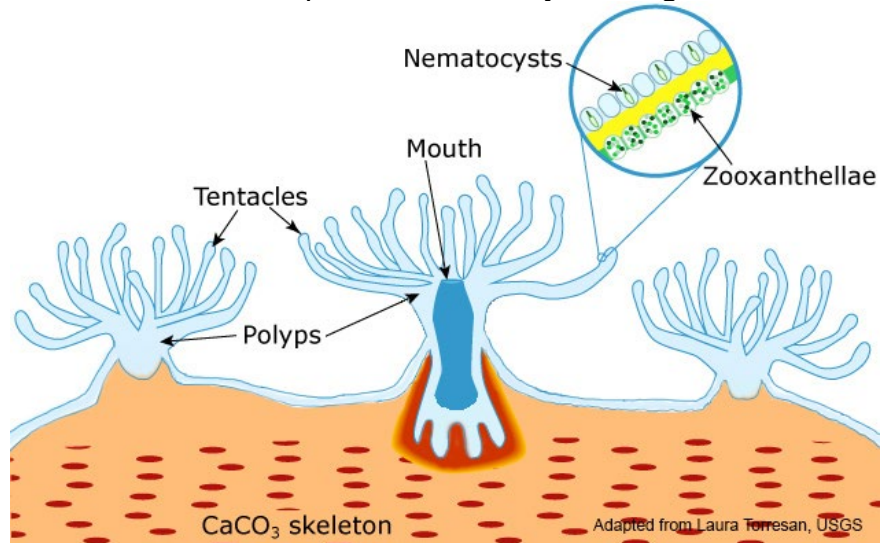




## Make an Edible Coral Model!

Objective: Students learn the various parts of a coral by building an edible coral polyp model!

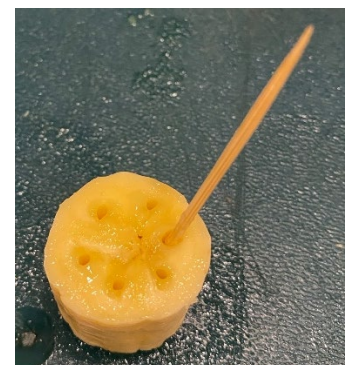


### Materials needed:

Toothpicks, scissors, marshmallow (or banana), red licorice, sugar, green food coloring, puffed rice treat. Definitions to know: coral polyp, coral skeleton, tentacles, zooxanthellae (*Symbiodinium* spp. algae), nematocysts (stinging cells).

### Instructions:

Make the Coral Skeleton that the polyp secretes by making a bowl out of a puffed rice treat, and the Polyp out of the marshmallow or piece of banana: Poke holes in the top of the polyp with the toothpick. This will allow you to insert the tentacles.



Add the Zooxanthellae, these live inside the skin of the coral polyp, but you can add a few drops of green food coloring to sugar, mix it, and paint it onto the sides of the marshmallow or roll the banana in it to represent the algae. You can also use cake sprinkles.



Cut pieces of licorice into strands, these will act as the Tentacles. You can dust them with white sugar to represent the nematocysts (stinging cells) if you like or leave them plain. Insert the tentacles into the marshmallow. Cut the end of one piece of licorice to make a Mouth and you are done!!



For more information contact us at:

**The Center for Community Education**, Hawai'i Institute of Marine Biology, [www.himbcep.org](http://www.himbcep.org)

To learn more about corals, consider watching "Chasing Corals", a Netflix documentary on coral reefs: <https://www.youtube.com/watch?v=aGGBGcidjXA>